

## Ground Penetrating Radar for non-destructive analysis

Ground Penetrating Radar products for non-destructive surveys of structures and buildings provide valuable information on:

- concrete thickness and inner rebar structure
- presence of wall cavities
- presence of water
- reconstruction of wall internal structure
- detection of structural defects



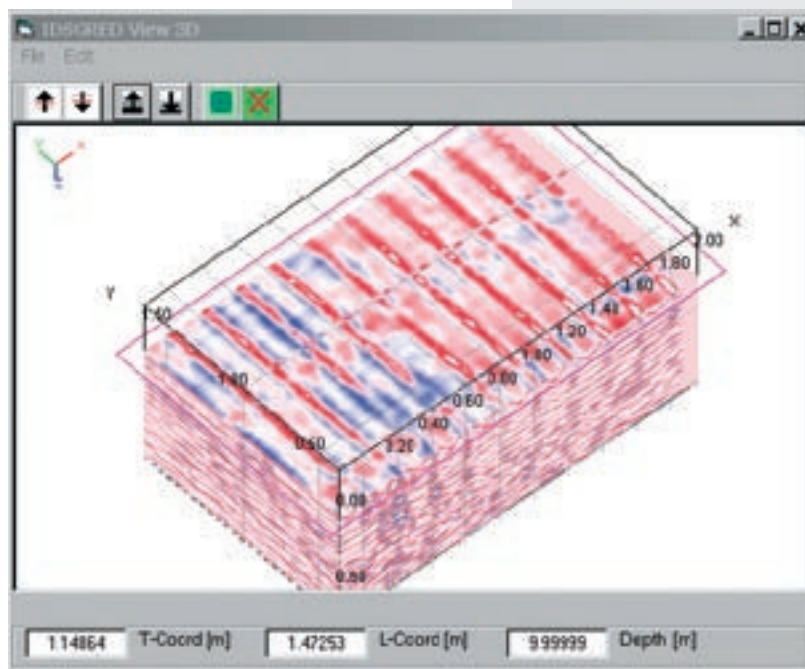
IDS GPR technology is an effective non-destructive tool for structural analysis. The IDS GPR products offer a set of unique solutions featuring

dedicated high frequency antenna configurations and 3D software processing solutions.



## Features

- Superior data quality provided by digital electronics (patent pending)
- The most compact and light weight antennas on the market, especially important when surveying walls and ceilings
- High resolution antennas (1600, 2000 MHz)
- A unique 2000 MHz bi-polar antenna permits reduced acquisition time and enhanced target detection inside structures
- Special compact multi-frequency antennas combine high resolution with deep surveying
- Highly efficient array of multi-frequency antennas permits faster surveying and better target detection inside structures (Hiress)
- Dedicated 3D software (GRED-3D) gives a three-dimensional rendering of the surveyed volume
- The dedicated trolley kit makes it easy to guide the antennas across the survey area.



## Specifications

- Operating time: up to 10 hours
- Radar control unit compatible with all IDS antennas
- Multi-channel unit capable of supporting up to 8 channels (8 Tx + 8 Rx)
- Special antennas with multi-frequency elements in a single compact box (600-1600 MHz)
- High frequency antenna array module (Hiress)
- 2 GHz Bipolar antenna



**IDS Ingegneria Dei Sistemi S.p.A.**  
Pisa Branch Office  
via Sterpulino 20, 56121 Pisa, Italy  
tel. +39 050 967111 · fax +39 050 967121

*For further information contact*  
tel +39 050 967123/24  
e-mail: sales.gpr@ids-spa.it  
www.idsgeoradar.com